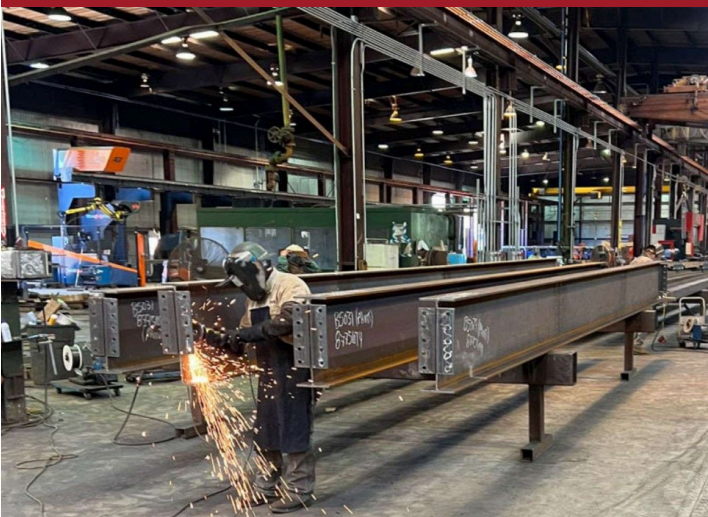




Enerforge Private Limited (Formerly known as Kunal Turbo Energy Private Limited)

COMPANY PROFILE

—
Optimizing Industrial Fabrication Processes with Integrated Automation Technologies!



 +91 9695400999

 info@enerforge.in

PORTFOLIO

ABOUT US

We are a solutions-driven fabrication company leveraging advanced automation technologies to deliver precision-engineered structures, tanks, and complex assemblies for industrial infrastructure. Our expertise spans precision machining and light-to-heavy steel fabrication, supported by comprehensive in-house design, process engineering, and installation capabilities.

Sectors

The company provides expert services to key sectors: Power Generation; Oil & Gas; Renewable Energy; Steel & Metals; Cement; Chemical Industries; Manufacturing; Material Handling; Warehousing & Logistics; Construction & Civil Infrastructure; and Commercial Infrastructure.

Capabilities

Capabilities include CNC profile cutting, bending, rolling and semi-automatic FCAW welding, surface preparation and coatings, hydraulic testing benches.

Delivery model

The execution process will follow a structured sequence comprising Engineering, Procurement, Fabrication, Assembly, Testing, Logistics, and Installation & Commissioning, as per the contractual requirements.

VISION, MISSION, CORE VALUE



01 VISION

To be the global benchmark of trust, quality, and timely excellence, driving world-class fabrication that transforms industrial infrastructure.

02 MISSION

Engineering Excellence - To engineer precision-driven, future-ready systems that maximize safety, efficiency, and sustainability, adding long-term value to industrial infrastructure.

Innovative Project Delivery - To transform project execution through world-class modularization, precision pre-assembly, and seamless digital integration.

Client-Centric Leadership - To establish a global benchmark for client satisfaction through uncompromising quality, transparent collaboration, and agile, results-driven solutions.

03 CORE VALUE

Integrity & Trust - We build trust through ethical actions and transparent decisions every day.

Innovate & Excel - We pioneer better solutions and pursue unmatched quality in everything we do.

Protect & Sustain - We safeguard our teams, communities, and environment for a resilient future.

Collaborate & Own - We achieve superior results through shared accountability and empowered teamwork.

Client Success - We measure our success by the value and reliability we deliver to our clients.

KEY MANAGEMENT

Our leadership blends with production, and project management expertise. The team is accountable for Cost, Quality, Safety, and Schedule (CQSS) and drives lean transformation and supplier partnerships.



Mr. Sanjay Singh

Enerforge Pvt. Ltd., led by Mr. Sanjay Singh and Mr. Mahendra Singh, is a solutions-driven fabrication company committed to redefining industrial infrastructure for a modern India. With strong technical and financial administration, Enerforge delivers high-precision mechanical installation and commissioning services across major industrial projects.



Mr. Mahendra Singh

We specialize in advanced automation-enabled fabrication, offering precision-engineered structures, tanks, technological columns, ducts, and complex assemblies. Our capabilities cover light-to-heavy steel fabrication, precision machining, and complete in-house design, process engineering, and installation support.

We believe in

PRECISION. INNOVATION. AUTOMATION

INDUSTRY SERVED



01 **POWER AND ENERGY INDUSTRIES:**

Fabrication of columns, beams, bracings, runners and structural assemblies with platforms.

02 **WAREHOUSING & LOGISTICS:**

Fabricate /Manufacture of high-capacity storage mezzanines, conveyor support structures, and heavy-duty racking frames.

03 **MANUFACTURING & AUTOMOTIVE:**

Custom production structures and robust material-handling systems.

04 **LARGE-SCALE INFRASTRUCTURE & EPC:**

Provision of modular steel components and comprehensive site.

05 **OIL, GAS & NUCLEAR:**

Specialized fabrication and engineering solutions meeting the highest safety, precision, and compliance standards in critical energy sectors.

06 **CEMENT & CHEMICALS:**

Durable process trusses, pipe supports, and piping, including small vessels not governed by ASME codes.

We believe in

PRECISION. INNOVATION. AUTOMATION

PRODUCTS WE MANUFACTURE



01 **STRUCTURES (LIGHT TO HEAVY)**

We fabricate/manufacture light to heavy steel structures built for strength, precision, and long-term reliability across diverse industrial applications.

02 **BRIDGES / GIRDER**

We fabricate and manufacture strong and durable bridges and girders designed to handle heavy loads with long-lasting performance.

03 **TANK AND VESSELS**

Our tanks and vessels are built with precision to ensure safe storage and smooth processing of liquids and gases.

04 **TECHNOLOGICAL COLUMNS**

We produce high-quality technological columns engineered for efficient industrial operations and enhanced process stability.

05 **DUCTS**

Our ducts are crafted for reliable airflow management, ensuring smooth ventilation and efficient air distribution in industrial setups.

We believe in

PRECISION. INNOVATION. AUTOMATION

INFRASTRUCTURE & FACILITIES

Ensuring accuracy, reliability, and compliance in every build



01 STATE-OF-THE-ART MANUFACTURING FACILITY

Enerforge Pvt. Ltd. operates from a 19,000 sqm, ISO-certified, state-of-the-art facility. Our workshop includes two 100-meter span sheds and one 60-meter span shed, enabling smooth large-scale fabrication. The plant supports the full metal fabrication cycle – cutting, welding, machining, assembly, and finishing – with modern equipment to deliver high-quality, custom-engineered components.

02 OPTIMIZED PRODUCTION LAYOUT

Our facility is strategically organized to ensure smooth and efficient workflow.

- **CNC Plasma Cutting Machine** (4m × 28m) with 1 Plasma Torch + 1 Flame Profile Torch + 6 Strip Cutting Torches (Hypertherm MAXPRO 200)
- **ABW 1850 Ultra Heavy Duty Beam Welding Line with SAW Welding Equipment** (ESAB CPRA 1250i), Twin Wire Package, Additional Tilters, Laser Seam Tracking, Auto Fillet Size Control
- **Motorized Gantry with Dual Torch Head Beam Welding Machine** – SAW Process (ESAB CPRA 1250i)
- **Flange Straightening Machine** (Up to 60mm thick flanges) with Infeed & Outfeed Conveyors
- **CNC Plate Drilling Machine** – 1.5m × 3.0m (Max Plate 100mm, Hole Dia 40mm, Hydraulic Clamping, Chip Conveyor)
- **End Face Milling Machine with NC Controls & Hydraulic Beam Clamping**
- **RADIAL DRILLING Machine drilling cap.** in M.S. 50mm., Model : RD-50, duly fitted with 3HP motor for spindle.
- **Automatic Shot Blasting Machine for Blasting and Painting Facilities.**

Every stage is supported by a rigorous quality control system to ensure precision, durability, and consistent output.

We believe in

PRECISION. INNOVATION. AUTOMATION

INFRASTRUCTURE & FACILITIES

Ensuring accuracy, reliability, and compliance in every build



03 SCALABLE & INDUSTRY-READY CAPABILITIES

From small-batch custom fabrication to large-volume production, our operations are built to scale. We cater to major industries such as construction, oil & gas, automotive, infrastructure, and industrial equipment. With strong systems for safety, sustainability, and continuous improvement, Enerforge Pvt. Ltd. ensures reliable performance and maximum customer satisfaction.



We believe in

PRECISION. INNOVATION. AUTOMATION

WORKSHOP FACILITY:



CNC Plasma Profile & Strip Cutting Machine



Beam Assembly & Track Welding Station



Flange Straightening Machine



CNC Plate Drilling Machine



Blasting & Painting Facility



Gantry Beam Welding Machine

WORKSHOP FACILITY:

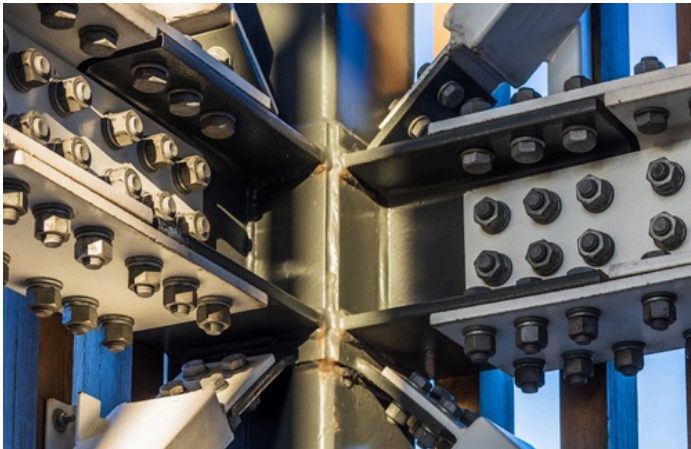


Milling Machine



EOT Crane

CRAFTING SOLUTIONS, EXECUTING EXCELLENCE



DRIVING INDUSTRIAL GROWTH WITH PRECISION & AUTOMATION



01 **PRECISION FABRICATION**

Consistently achieving world-class accuracy through CNC, automatic welding, and advanced testing.

02 **CUSTOMER SATISFACTION**

Trusted by leading global players across power, oil & gas, cement, and infrastructure sectors, we consistently exceed expectations through reliable performance, transparent communication, and long-term partnership focus.

03 **ON-TIME DELIVERY**

A robust and well-structured execution model enables us to plan, coordinate, and deliver projects within committed timelines, without compromising on workmanship or safety.

04 **SUSTAINABLE PRACTICES**

Our operations prioritize environmental responsibility, integrating resource-efficient processes and sustainable fabrication methods to minimize our ecological footprint while supporting a greener future.

We believe in

PRECISION. INNOVATION. AUTOMATION

QUALITY ASSURANCE

Our QA process ensures product integrity and compliance with ASME, AWS, and API standards.



01 INCOMING

Materials are verified via MTC and other required testing , with supplier quality ensured through rigorous vendor audits, guaranteeing compliance and reliability from the outset.

02 IN-PROCESS

Certified welders, qualified procedures, rigorous NDT, and dimensional checks per ASME/AWS and client standards and expectations—ensure integrity and precision throughout all in-process fabrication activities.

03 FINAL PRODUCT

Precision-fabricated structural components, fully inspected for dimensional accuracy, weld quality, and coating integrity, ensuring compliance with international standards and project specifications.

04 TRACEABILITY

Our rigorous traceability system ensures transparency, accountability, and confidence in the quality and reliability of every fabricated structure/ products.

We believe in

PRECISION. INNOVATION. AUTOMATION

SAFETY IS OUR COMMITMENT

Commitment to maintaining a safe and healthy work environment and minimizing the environmental impact of its operations.



01 HEALTH & SAFETY PRINCIPLES:

- Provide and maintain safe equipment, tools, and work environments.
- Conduct regular risk assessments and safety audits.
- Deliver training and personal protective equipment (PPE) as required.
- Establish emergency response procedures and conduct regular drills.

02 ENVIRONMENTAL STEWARDSHIP:

- Monitor and reduce emissions, energy usage, and waste generation.
- Promote recycling and responsible disposal practices.
- Ensure proper storage, handling, and disposal of hazardous substances.
- Integrate environmental considerations into planning and operations.

"When we prioritize safety, we protect lives, strengthen teams, and build a better tomorrow."

We believe in

PRECISION. INNOVATION. AUTOMATION

WORKED WITH:

A story about portfolio

APOLLO
Apollo International Ltd



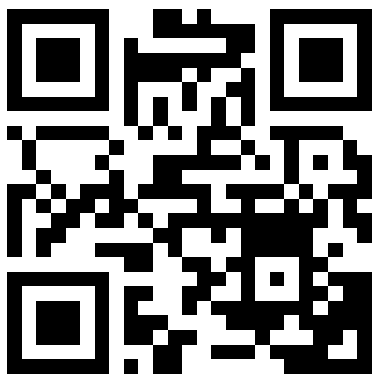
THANK YOU

By combining innovative design with rigorous engineering analysis, our fabrication company ensures the delivery of reliable, efficient, and cost-effective metal fabrication solutions. Our multidisciplinary team works closely with clients from concept through completion, guaranteeing projects that meet exact specifications and performance requirements.

**GSTIN: 09AAKCK2636F1ZG
CIN: U42909UP2023PTC182649**

We believe in

PRECISION. INNOVATION. AUTOMATION



Scan for Website

 +91 9695400999

Office Address: Araji 74, Plot No. 4,
Maswanpur, Rawatpur Gaon, Kanpur
Nagar (UP) - 208019

 info@enerforge.in



Factory Address: Arazi No - 174 & 175
Abhaypur - Shadipur, Kanpur - Prayagraj GT
Road (NH19), Dist. - Fatehpur, (UP) - 212665